

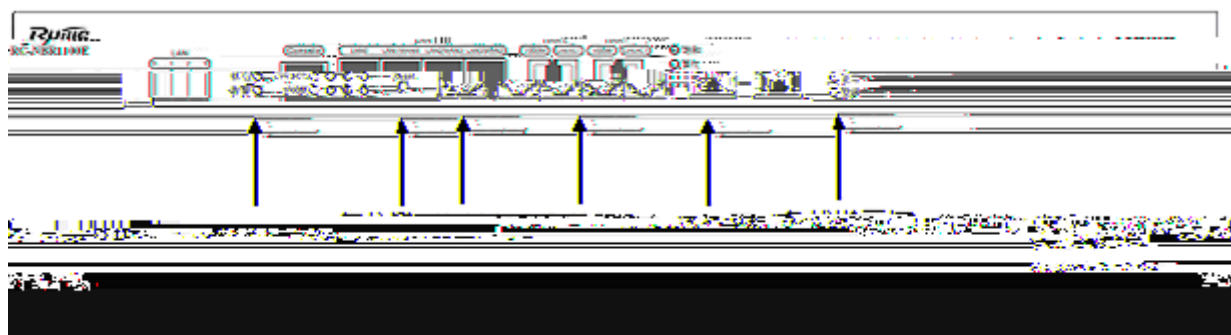
RG-NBR1100E

1.	NBR	2
1.1	NBR1100E	2
2.		4
3.		8
3.1		8
3.2		8
3.3		8
4.		9
4.1	IP	9
4.2	PPPoE	13
4.3	DHCP IP	16
5.	Web	21
5.1	Web	21
5.2		22
6.	NBR	29
6.1	NBR	29

OD.119>>.BDC.207W0N56 T 0 /s <</MCID.175>>.BDC.BT.0.T71.0.0.1.52.82.492.79.T(.)IET20../s <</MCID0611/2ag <BDCS

1. NBR

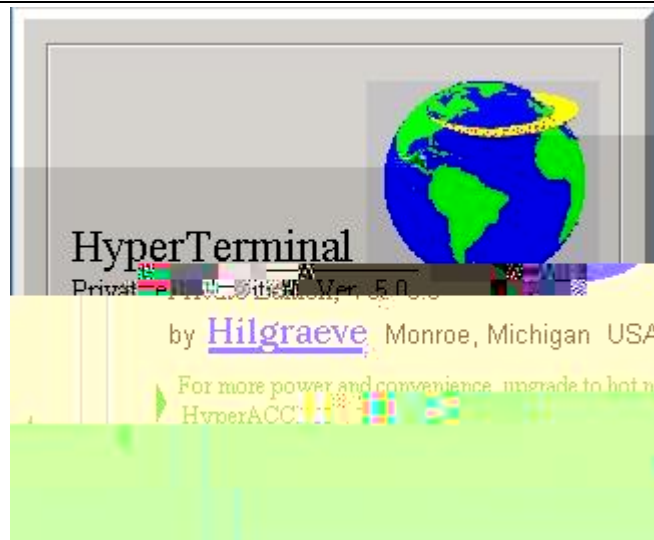
1.1 NBR1100E



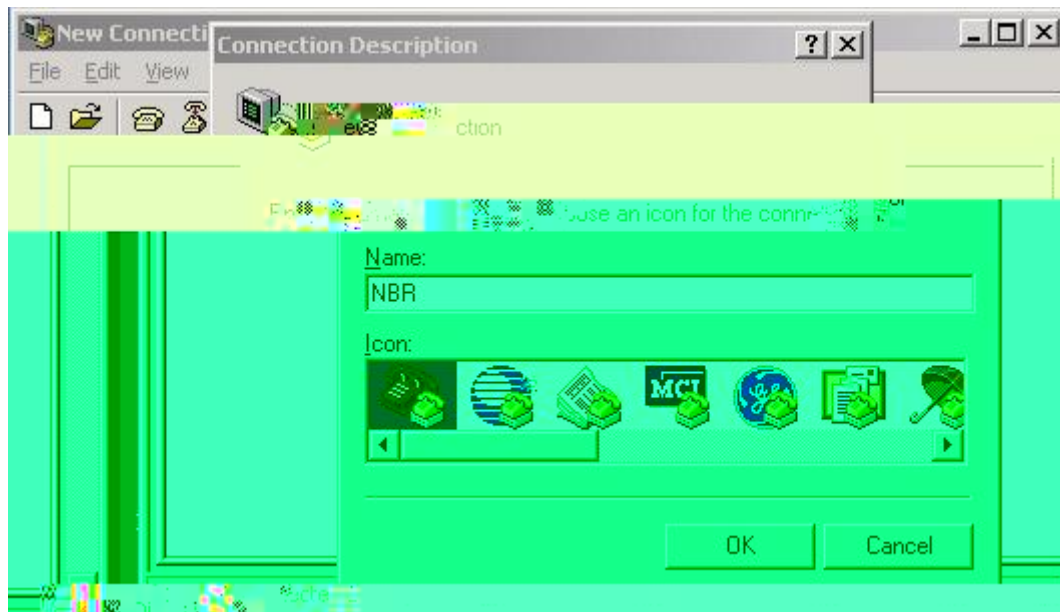
1-2 RG-NBR1100E

NBR1100E

	NBR1100E			
WAN	2	10/100	RJ45	Auto MDI/MDIX
LAN	4	10/100/1000M LAN1,LAN2,LAN3	RJ45 WAN	Auto MDI/MDIX , .
	1	Console		
	1	<3s >3s		
	1			
	1			



2-3



2-4

3.

3.1

-
-



A

3.2

3.3

-
-
-
-

	NBR80	NBR2000
" Status"	NBR2500/NBR3000	" SYSTEM"
	NBR1100E/NBR1200/NBR1200G/NBR1100G	" "
	Console	

4.

WEB

Console

enable

enable

```
NBR>  
NBR>enable  
Password:  
NBR# setup
```

<=

<=

setup

NBR

setup

NBR **RGOS**

CD-ROM

RGOS

www.ruijie.com.cn

NBR **setup**

4.1 IP

Internet

ctrl-c

'[]'

:

[NBR]:

:

telnet

:

WAN (1- ,2 - ,3- ,) [1]:

internet WAN :

0. WAN 0

1. WAN 1

(0 - 1)[0]:

:

1. IP

2. PPPoE

3. DHCP IP

(1 - 3)[1]:

```
1.  
2.  
3.  
    (1 - 3)[3]:  
        [yes]:  
WAN    ping
```

```
service timestamps debug datetime
service timestamps log datetime
no service password-encryption
!
interface FastEthernet 0/0
 ip nat inside
 ip access-group 3198 in
 no ip redirects
 no ip mask-reply
 no ip proxy-arp
 ip address 192.168.0.1 255.255.255.0
 arp gratuitous-send interval 1 5
!
interface FastEthernet 1/0
 ip nat outside
 ip access-group 3199 in
 no ip redirects
 no ip mask-reply
 no ip proxy-arp
 ip address 218.5.19.2 255.255.255.0
 duplex auto
 speed auto
!
interface FastEthernet 1/1
 duplex auto
 speed auto
 shutdown
!
interface Null 0
!
ip nat pool nbr_setup_build_pool prefix-length 24
 address 218.5.19.2 218.5.19.2 match interface FastEthernet 1/0
!
ip nat inside source list 99 pool nbr_setup_build_pool
ip nat translation max-entries 7000
ip nat translation per-user 0.0.0.0 1000
ip nat translation udp-timeout 150
ip nat translation icmp-timeout 30
ip nat translation tcp-timeout 600
ip nat translation finrst-timeout 20
ip nat translation dns-timeout 30
security anti-wan-attack level high
security anti-lan-attack
!
ip route 0.0.0.0 0.0.0.0 FastEthernet 1/0 218.5.19.1
!
line con 0
line vty 0
 login
 password 7 110022081d5e0834012e3e
line vty 1
 login
 password 7 072c06221a062210014f1f
line vty 2
 login
 password 7 093d101f2811175f1e2400
line vty 3
 login
 password 7 050a03330c3b1007340000
line vty 4
 login
 password 7 08112a181d330007590833
```

```
!  
!  
end
```

4.2 PPPoE

ADSL

Internet

```

:
1. IP
2. PPPoE
3. DHCP IP
   (1 - 3)[1]:
   PPPoE      :
   PPPoE      :pppoepassword
   ISP        Mbps (1-100)[ 100]:

:          telnet          LAN IP
          LAN

LAN IP[192.168.0.1]:
LAN      [255.255.255.0]:
          ARP[yes]:
          (1 - 3600)[1]:
1          (1 -100)[5]:
          [no]:          NBR

          [yes]:
          [yes]:

:
1.
2.
3.
   (1 - 3)[3]:
   [yes]:
WAN ping [no]:
   IP      [no]:

   DNS      (DNS      ) [no]:

:
:
:
telnet      :
:
WAN 0:
:
:
: 100 Mbps
:
: 192.168.0.1 255.255.255.0
   ARP: 1 Seconds
:
:
:
WAN ping :
   DNS      (DNS      ):
   [yes]:

```

!
NBR#show running-config


```

!
interface Null 0
!
!
ip nat pool nbr_setup_build_pool prefix-length 24
address interface dialer 0 match interface dialer 0
!
ip nat inside source list 99 pool nbr_setup_build_pool
ip nat translation max-entries 7000
ip nat translation per-user 0.0.0.0 1000
ip nat translation udp-timeout 150
ip nat translation icmp-timeout 30
ip nat translation tcp-timeout 600
ip nat translation finrst-timeout 20
ip nat translation dns-timeout 30
security anti-wan-attack level high
security anti-lan-attack
!
ip route 0.0.0.0 0.0.0.0 dialer 0
!
line con 0
line vty 0
  login
  password 7 04220b032c
line vty 1
  login
  password 7 1000012217
line vty 2
  login
  password 7 08163c1000
line vty 3
  login
  password 7 072b102a07
line vty 4
  login
  password 7 050d153b11
  !
  !
end

```

```

          PC
NBR  WAN  LAN

```

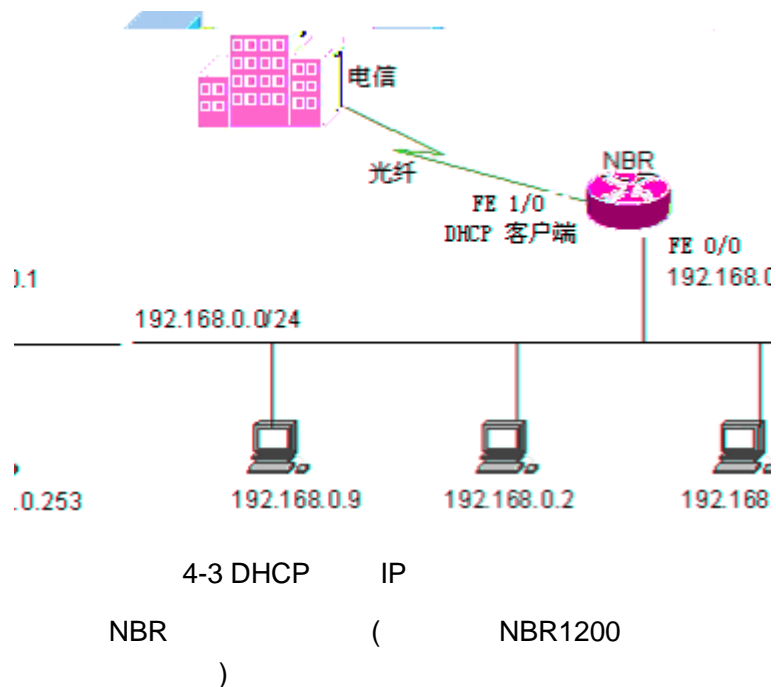
4.3 DHCP IP

```

          Internet
WAN      WAN      DHCP      IP      LAN
192.168.0.1      Internet      LAN  WAN      NAT

```

NBR



```
NBR >enable
!
NBR#setup
```

```
ctrl-c
```

```
'[]'
```

```
:
```

```
[NBR]:
```

```
:
```

```
telnet
```

```
WAN (1- , 2 - , 3- , ) [1]:
```

```
internet WAN :
```

```
0. WAN 0
```

```
1. WAN 1
```

```
(0 - 1)[0]:
```

```
:
```

```
1. IP
```

```
2. PPPoE
```

```
3. DHCP IP
```

```
(1 - 3)[1]:3
```

```
ISP Mbps (1-100)[ 100]:
```

```
ARP[no]:
```

```
: telnet
```

```
LAN IP
```

```
LAN
```

```
LAN IP[192.168.0.1]:
```

```
LAN [255.255.255.0]:
```

```
ARP[yes]:
```

```
(1 - 3600)[1]:
```

1

(1 -100)[5]:

[no]: NBR

[yes]:

[yes]:

:

~~14-11 10-1 4-1~~

```
access-list 99 permit any
dialer-list 1 protocol ip permit
!
service sequence-numbers
service timestamps debug datetime
service timestamps log datetime
no service password-encryption
!
interface FastEthernet 0/0
 ip nat inside
 ip access-group 3198 in
 no ip redirects
 no ip mask-reply
 no ip proxy-arp
 ip address 192.168.0.1 255.255.255.0
 arp gratuitous-send interval 1 5
!
interface FastEthernet 1/0
 ip nat outside
 ip access-group 3199 in
 no ip redirects
 no ip mask-reply
 no ip proxy-arp
 ip address dhcp
 duplex auto
 speed auto
!
interface FastEthernet 1/1
 duplex auto
 speed auto
 shutdown
!
interface Null 0
!
!
ip nat pool nbr_setup_build_pool prefix-length 24
 address interface FastEthernet 1/0 match interface FastEthernet 1/0
!
```

```
security anti-wan-attack level high
security anti-lan-attack
!
!
line con 0
line vty 0
  login
  password 7 131717470235173e3f0057
line vty 1
  login
  password 7 04251d0b31172a00012217
line vty 2
  login
  password 7 0132464e380c032b102a07
line vty 3
  login
  password 7 08112a181d330007590833
line vty 4
  login
  password 7 03513215092a063a061735
!
!
end
```

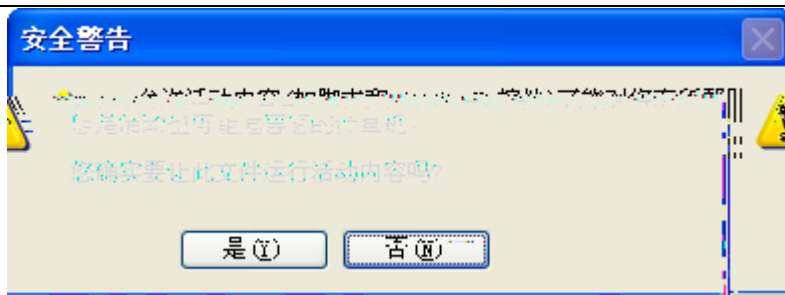
5. Web

Web

CD-ROM

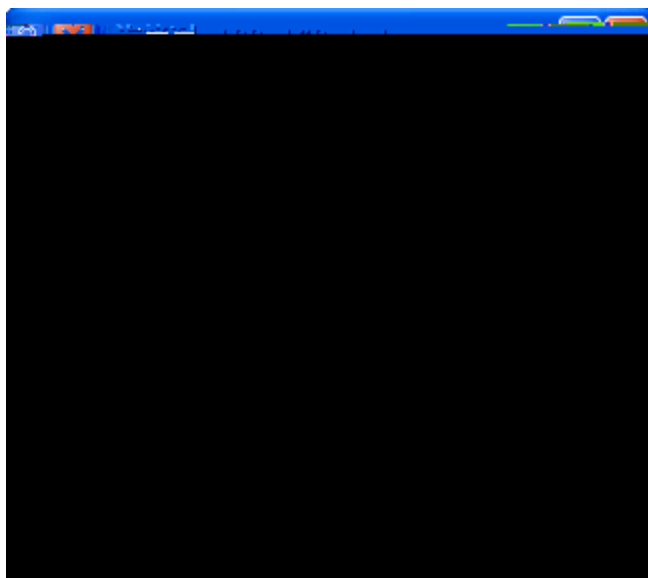
5.1 Web

LAN WAN IP



5-2 " (Y)"

" WEB " " WEB
 admin



5-3

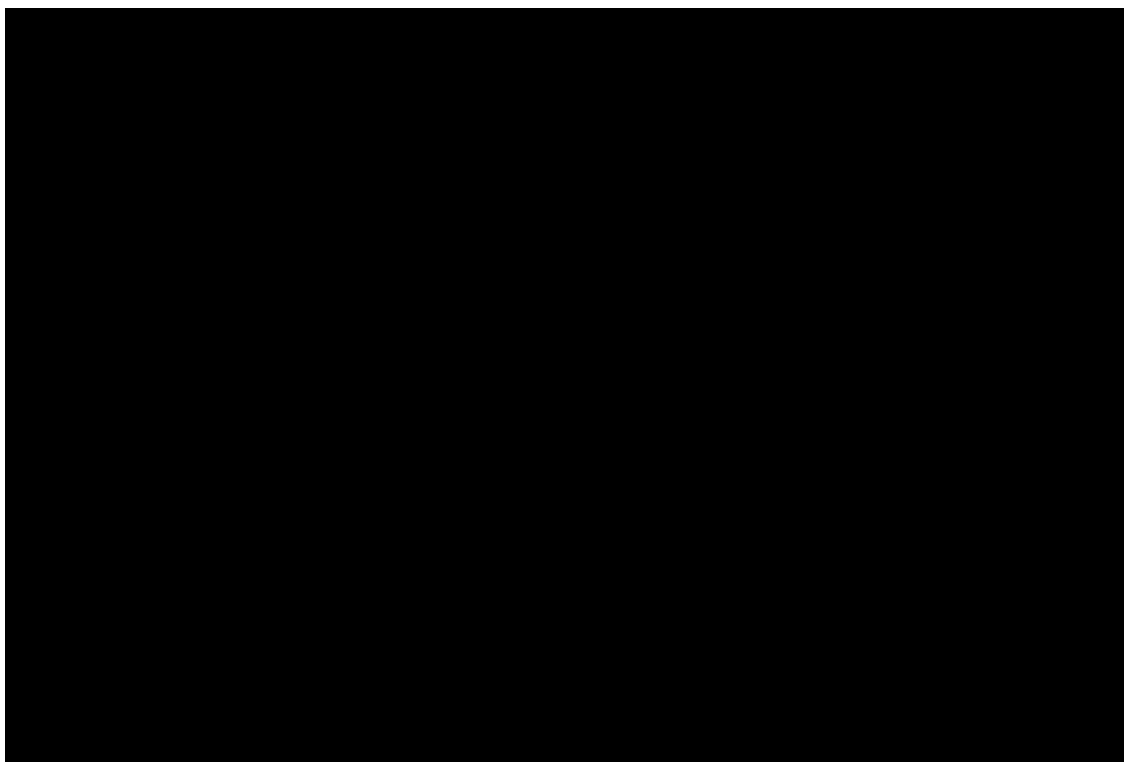
web flash web htm js

" " " WED "

Web

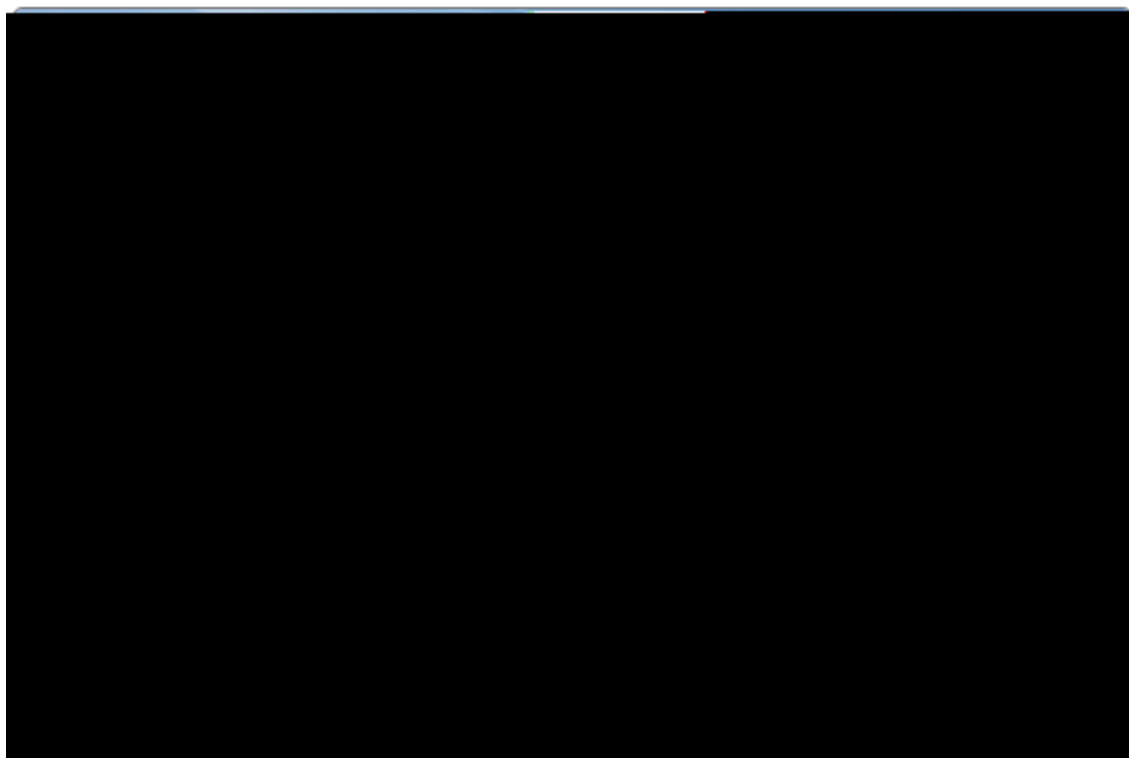
5.2

NBR
 NBR



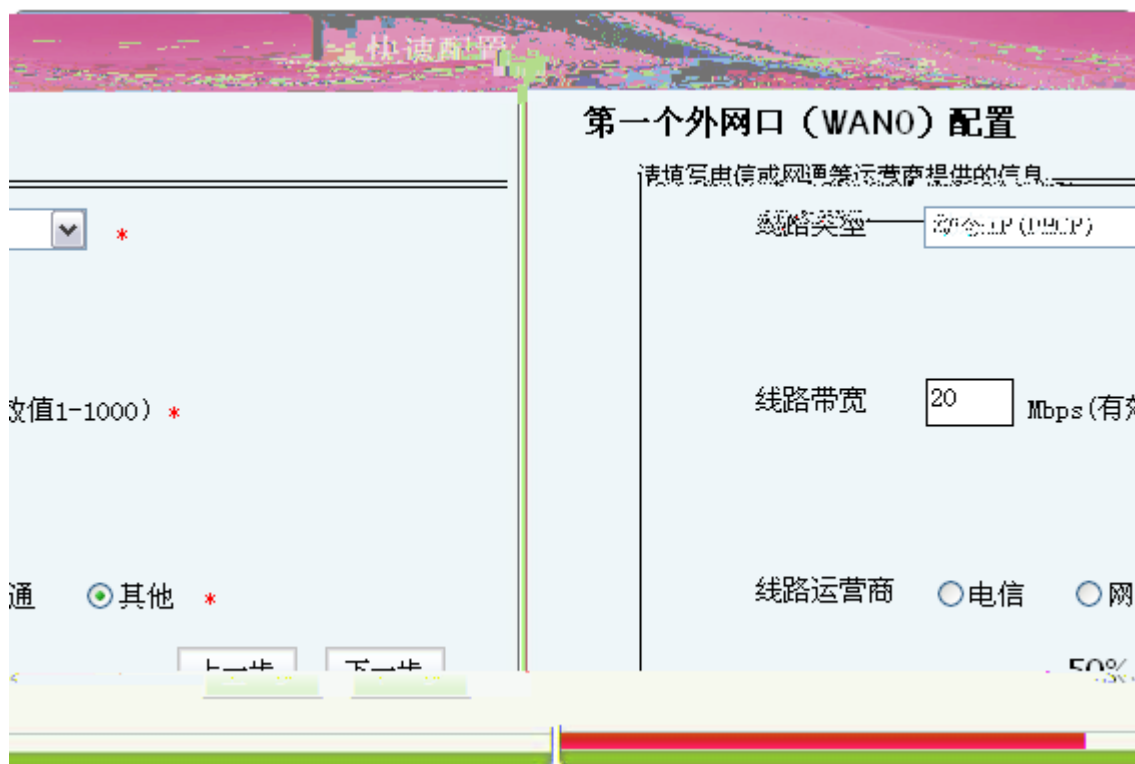
5-4

" " LAN



5-5 LAN

LAN IP " " WAN
LAN IP



5-7 WAN0 IP

"PPPoE"



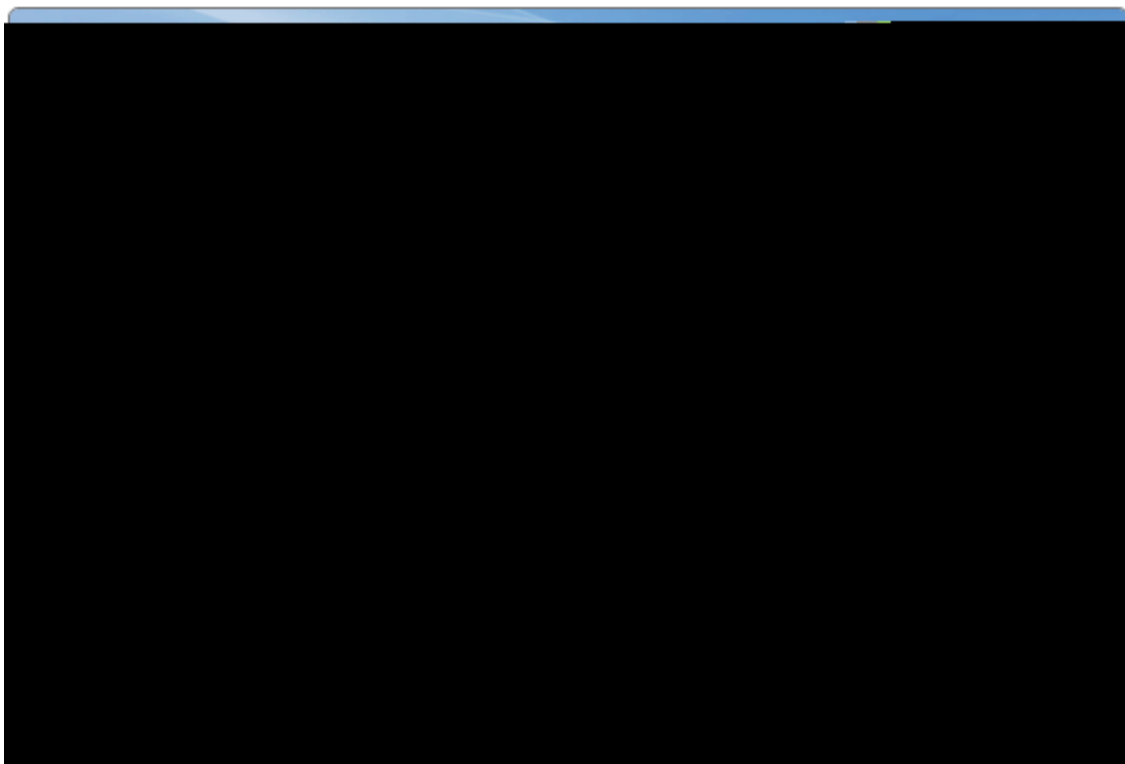
5-8

ADSL

1-1000M

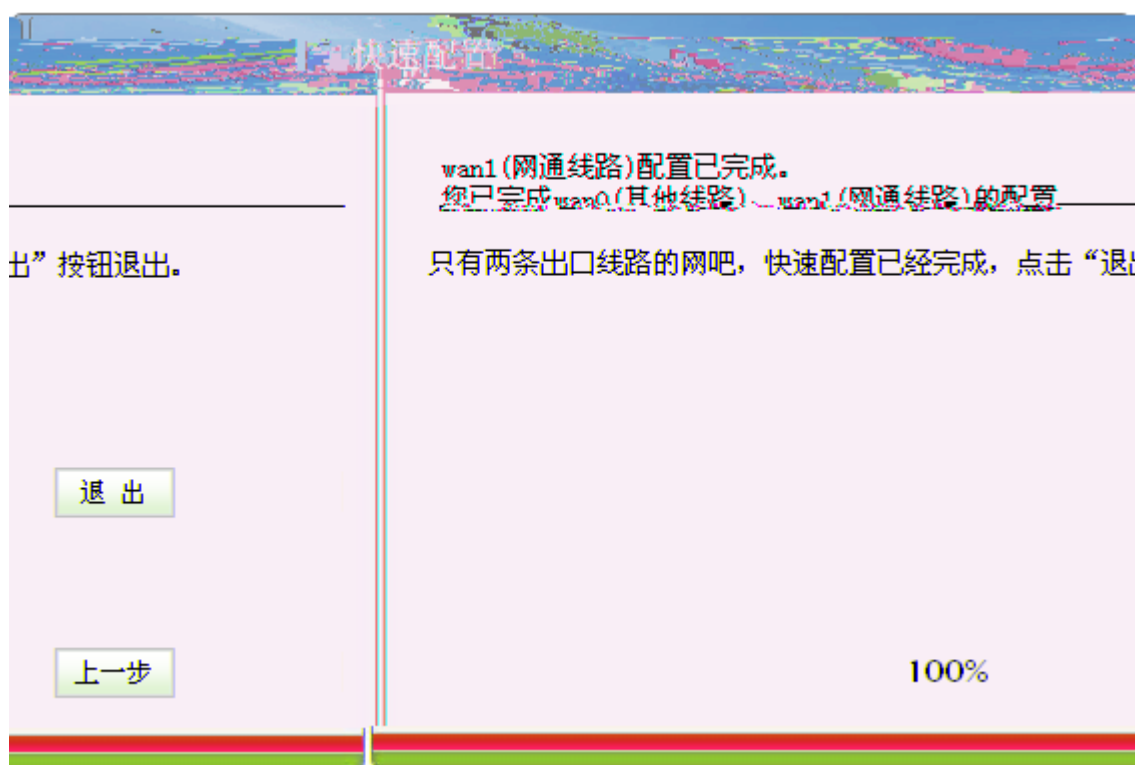
WAN0

WAN0



5-9 WAN0 PPPoE

WAN0				WAN1	"		(wan1)"
	"	"	"	"			
	LAN	IP				IP	Web
	WAN		WAN1			WAN	WAN

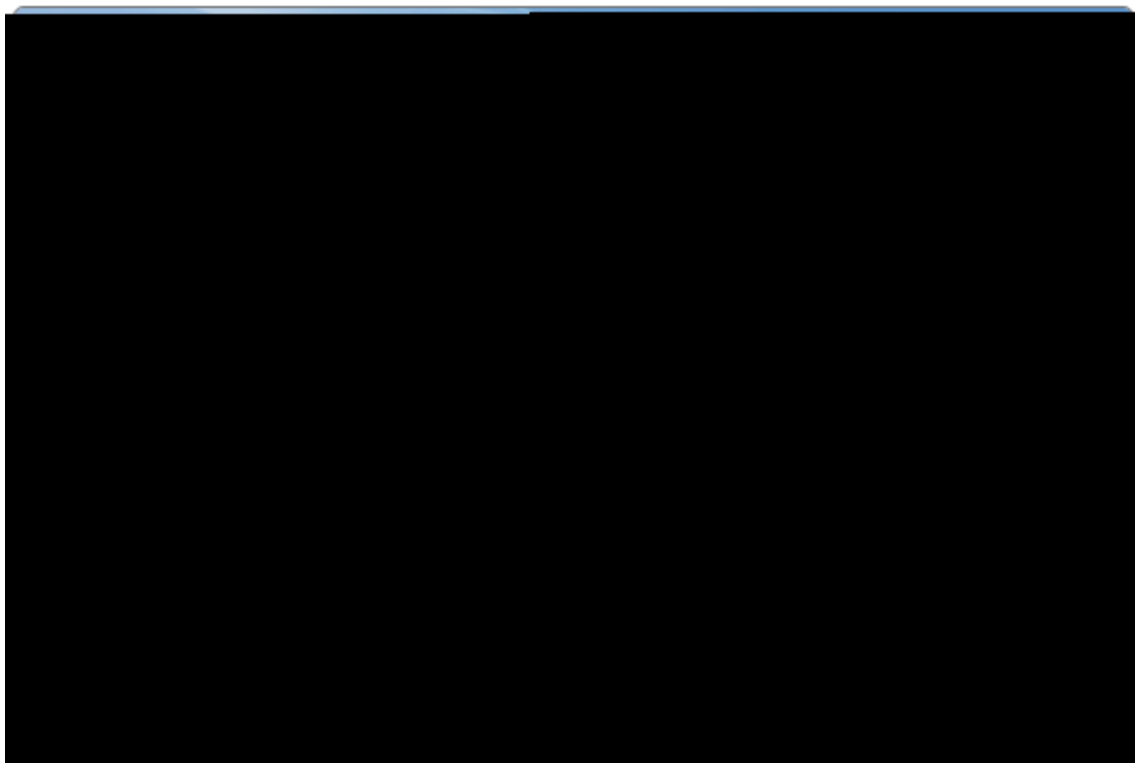


5-10 WAN

WAN

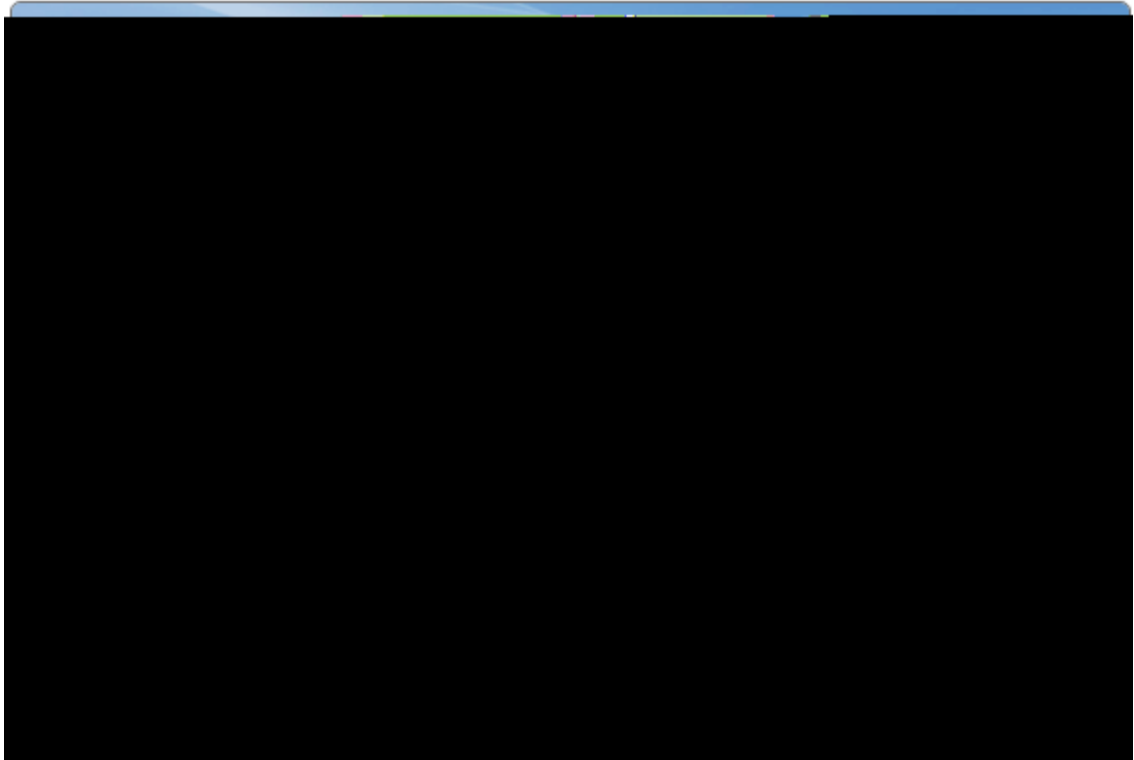
" "

WAN



5-11

" "



5-12

LAN IP

IP

Web

6. NBR

NBR

NBR

NBR

3

4

GB50174-93

4

4

5

6.2

6.2.1

IN OUT

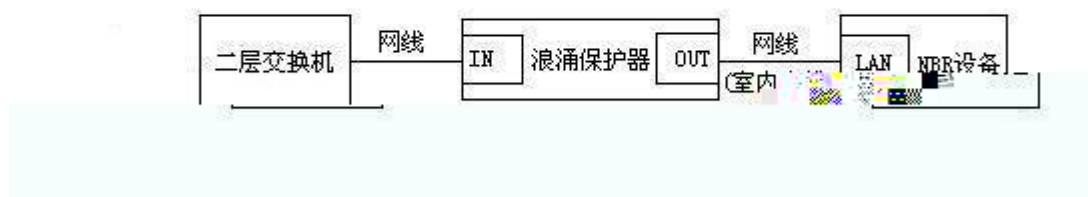
1 WAN



6-1 WAN

- i. ADSL Modem NBR ADSL Modem
- IN NBR WAN OUT
- ii.
- iii.
- iv. ADSL Modem NBR

2 LAN



6-2 LAN

- i. NBR
- ii. IN NBR LAN NBR OUT
- iii.
- iv.
- v. NBR NBR

6.2.2

RJ45